



**walvoil**  
MOTION BY PEOPLE

**NEW**

## SVM103

Hydraulic joystick

### SVM103 JOYSTICK

- Designed for Blade control
- Very compact size
- Maximum integration with Walvoil BWH handle



Walvoil presents the new SVM103 single axis hydraulic joystick, especially designed for Blade control on Mini/Midi-excavator applications.

This small size joystick is suitable for cabin installation with minimum space: the configuration with Walvoil BWH handle emphasizes its compactness and functionality. SVM103 can use all the pressure control curves of the SVM series standard range.

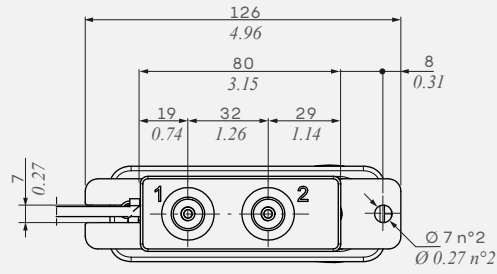
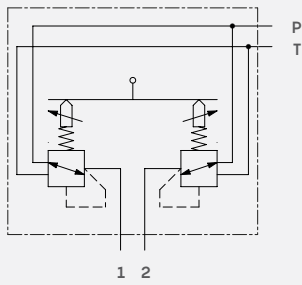
## WORKING CONDITIONS



Min. pressure	30 bar - 435 psi
Max. pressure	100 bar - 1450 psi
Max. rated flow	20 l/min - 5.28 US gpm
Hydraulic fluid	Mineral based oil
Kinematic viscosity	3 - 400 mm <sup>2</sup> /s - 3 - 400 cSt
Operating temperature	-10/+80°C - 14/+176°F
Contamination	15/12 (ISO/DIN 4406)
Histeresis max.	0.5 bar - 7.25 psi
Max. internal leakage P→T, 30 bar - 450 psi	9 cm <sup>3</sup> /min - 0.54 in <sup>3</sup> /min

DIMENSIONAL DATA

HYDRAULIC CIRCUIT



PORTS THREADING	
BSP	UN-UNF
G1/4	9/16-18 (SAE6)

STRAIGHT TYPE CURVE  
(example)

