



## DF350

### Hydraulic control monoblock diverter valve

- 6 ways configuration
- Ports with SAE flange connection
- Hydraulic controls
- Galvanized body

This catalogue shows technical specifications and diagrams measured with mineral oil of 46 mm<sup>2</sup>/s (46 cSt) viscosity at 40°C - (104°F) temperature.

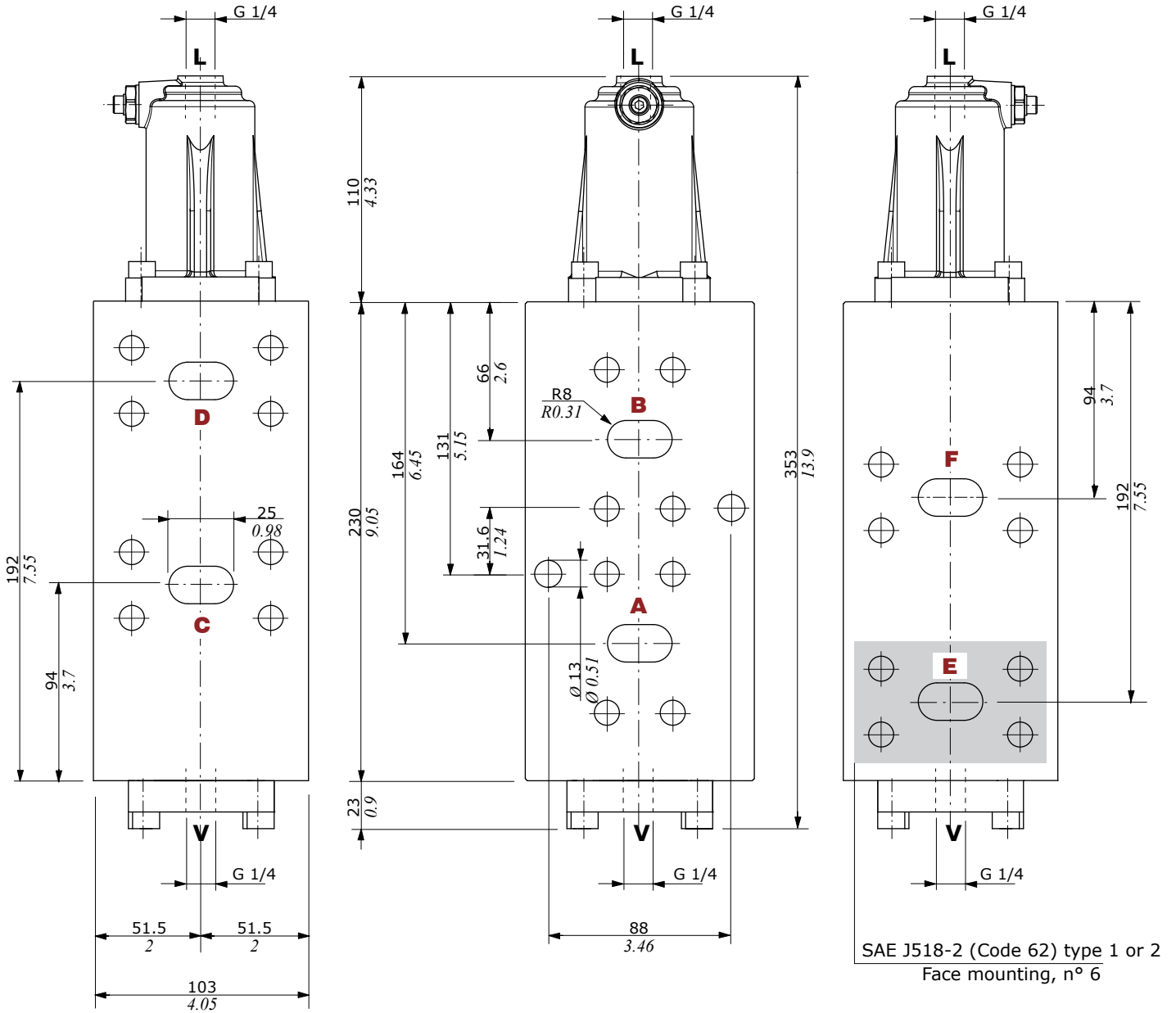
WORKING CONDITIONS		
N. of available ways		6
Max. flow rating		350 l/min (92.4 US gpm)
Max. pressure		350 bar (5100 psi)
Internal leakage A(B)⇒T	Δp = 100 bar (1450 psi)	8 ÷ 12 cm <sup>3</sup> /min (0.48 ÷ 0.73 in <sup>3</sup> /min)
Fluid		Mineral based oil
Fluid temperature	with NBR (BUNA-N) seals	from -20°C to 80°C (from -4°F to 176°F)
	with FPM (VITON) seals	from -20°C to 100°C (from -4°F to 212°F)
Viscosity	operating range	from 10 to 300 mm <sup>2</sup> /s (from 10 to 300 cSt)
Max. level of contamination		20/18/15 - ISO 4406 - NAS 1638 - class 9
Ambient temperature for working conditions		from -40°C to 60°C (from -40°F to 140°F)

NOTE - For different working conditions please contact Sales Dept.

## Available threads

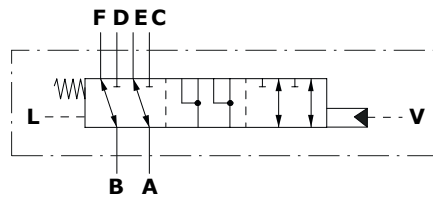
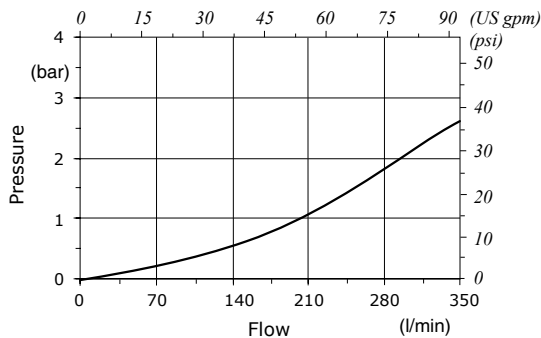
FLANGE CONNECTION (ASSEMBLING SCREW)		
Type	ISO6162-2 / SAE J518-2 (Code 62) Type 1	SAE J518-2 (Code 62) Type 2
DF350	DN32 (M12) 1" 1/4 (M12)	1" 1/4 (1/2-13 UNC)

## Dimensional data - hydraulic circuit - performance data



Pressure drop versus flow

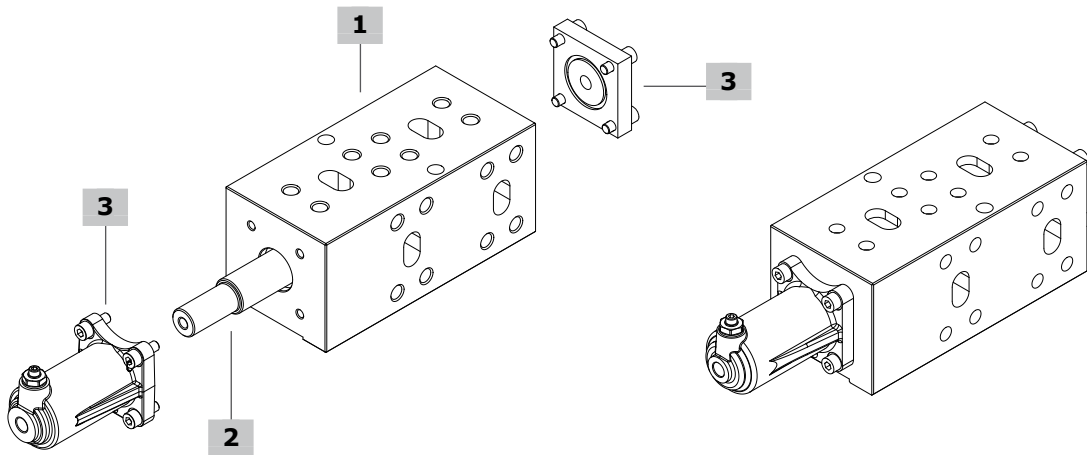
P → A(B)



**Part ordering codes**

Example:

**DF350** / **W025A** - **H005** - **DB** **S37** - **(CRZ)**  
 1                      2                      3                      1                      1                      Galvanized body

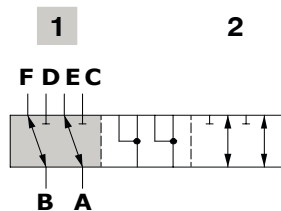


1 Body kit		3 Complete controls	
TYPE: <b>DF350-DB-S37</b>	CODE: 430036002	TYPE	CODE DESCRIPTION
DESCRIPTION: 6 ways body kit, DN32/1" 1/4, ISO6162-2 / SAE J518-2 (Code 62) Type 1 flange		<b>H005</b>	320536002 Hydraulic control, with G1/4 port
TYPE: <b>DF350-DB-S38</b>	CODE: 430036003		430036001 Flange kit for hydraulic control, with G1/4 port
DESCRIPTION: 6 ways body kit, DN32/1" 1/4, SAE J518 (Code 62) Type 2 flange		Pilot pressure: min = 4.4 bar (64 psi) / max = 20.8 bar (302 psi)	

2 Spools		page 73
TYPE	CODE	DESCRIPTION
<b>W025A</b>	421236002	Flow in E and F. C and D closed in pos. 1 Ports connected in transit position
<b>W026A</b>	421236001	Flow in E and F. C and D closed in pos. 1 Ports closed in transit position

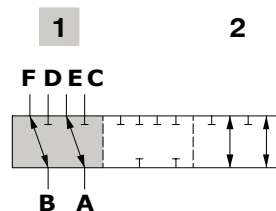
**Spool circuits**

**Type W025A**  
 Flow in E and F. C and D closed in pos. 1  
 Ports connected in transit position



**Spool stroke**  
 Position 2: + 13 mm (0.51 in)

**Type W026A**  
 Flow in E and F. C and D closed in pos. 1  
 Ports closed in transit position



**Spool stroke**  
 Position 2: + 13 mm (0.51 in)