



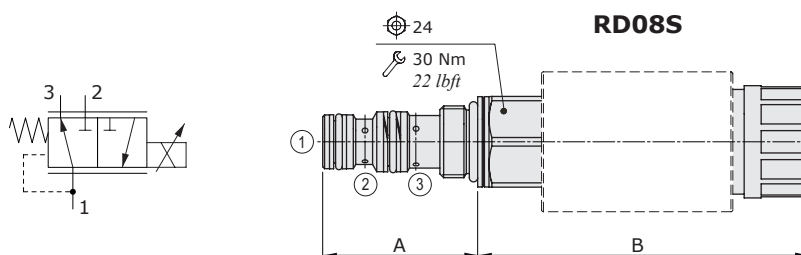
RD08S-RD08T type pressure reducing valves - 3 way

- Solenoid proportional type, direct acting
- With relieving (NO)
- Spool type

Technical specifications and diagrams are measured with mineral oil of 46 cSt viscosity at 40°C (104°F) temperature.

	RD08S	RD08T
Nominal flow	4 l/min (1.05 US gpm)	12 l/min (3.17 US gpm)
Max. pressure	210 bar (3050 psi)	
Oil leakage	-	
Fluid	mineral based oil	
Viscosity	10-200 cSt	
Max level of contamination	18/16/13 ISO4406	
Fluid temperature	with NBR seals with FPM seals	from -20°C (-4°F) to 80°C (176°F) from -20°C (-4°F) to 100°C (212°F)
Environmental temp. for working conditions	from -40°C (-40°F) to 100°C (212°F)	
Cavity	SAE 08/3	SAE 8/3
Coil type*	MSM 19	
Nominal voltages	12 VDC - 24 VDC	
Power rating	21.6 W (12 VDC) - 22.5 W (24 VDC)	
Max control current	12 V -> 1.25 A - 24 V -> 0.68A	
Dither frequency	150 Hz	
Hysteresis	≤4%	
Weight	0.492 kg (1.08 lb)	1.140 kg (0.79 lb)

NOTE - For different conditions, please contact Walvoil Sales Dpt. - For coils further features see from page 206.



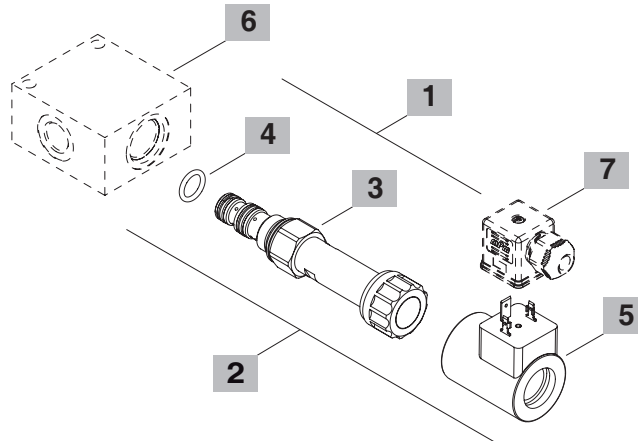
Valve type	A		B	
	mm	in	mm	in
RD08S	41	1.61	87.5	1.27
RD08T	41	1.61	97	1.81

Ordering codes and description composition

RD08S/003B



RD08S/023B



1 Cartridges

TYPE	CODE	DESCRIPTION
RD08S/003B	ORD08002025	Pressure range 1
RD08T/001B	ORD08002016	Pressure range 2

2 Complete cartridges

TYPE	CODE	DESCRIPTION
RD08S/023B	ORD08002023	Pressure range 1 , 12VDC
RD08T/021B	ORD08002024	Pressure range 2 , 12VDC

3 Pressure range

TYPE	DESCRIPTION
1	Pressure range 5÷45 bar (72.5÷652.5 psi)
3	Pressure range 5÷35 bar (72.5÷507.5 psi)

4 Seals

TYPE	DESCRIPTION
B	NBR (Buna) o-ring seals, std configuration
V	FPM (Viton) o-ring seals, contact Sales Dept.

5 Coils

TYPE	CODE	DESCRIPTION
2) MSM 19 12VDC	4SL5000128	12VDC-ISO4400 coil
4) MSM 19 24VDC	4SL5000247	24VDC-ISO4400 coil

For complete coils list see page 206

6 Valve body

TYPE	CODE	DESCRIPTION
SAE 08/3-G 3/8	3CC0830C11	Aluminium body for cavity 8 valve, G 3/8 std thread

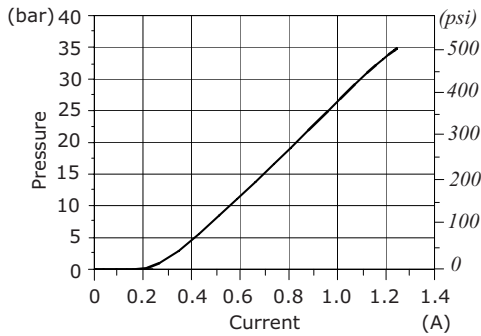
Note: aluminium body can stand up to 210 bar (3050 psi)
For steel bodies or different threading see from page 217

7 Connector

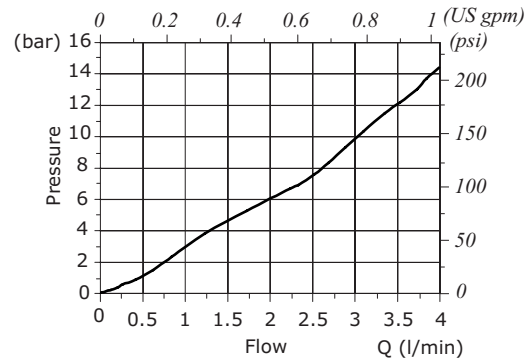
TYPE	CODE	DESCRIPTION
ISO4400	4CN1009995	Connector

For complete connectors list see from page 206

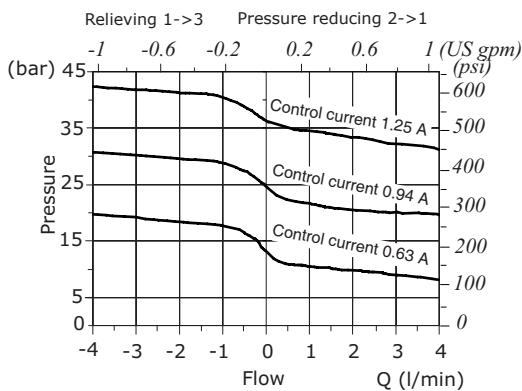
RD08S pressure reducing vs. control current
12 VDC power supply



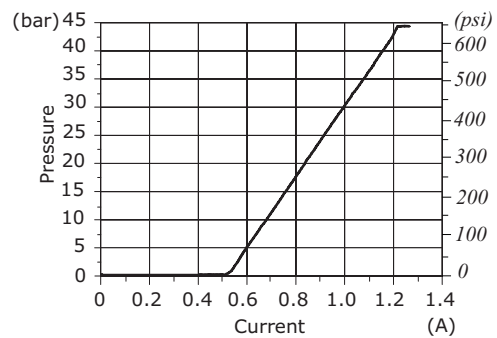
RD08S pressure drop vs. flow 2->1



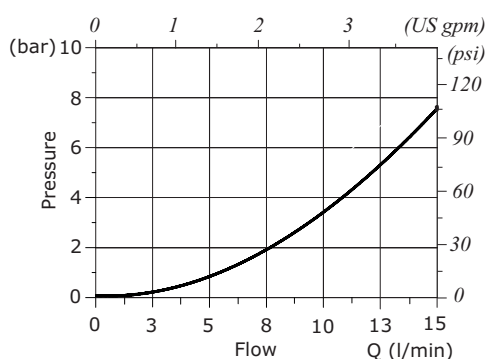
RD08S reducing/relieving pressure vs. flow
for % of control current



RD08T pressure reducing vs. control current
12 VDC power supply



RD08T pressure drop vs. flow 2->1



RD08T reducing/relieving pressure vs. flow
for % of control current

