



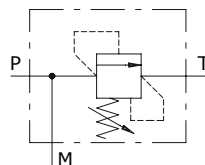
## Type VMPD/B pressure relief valves

- Differential pressure relief valve
- Poppet type

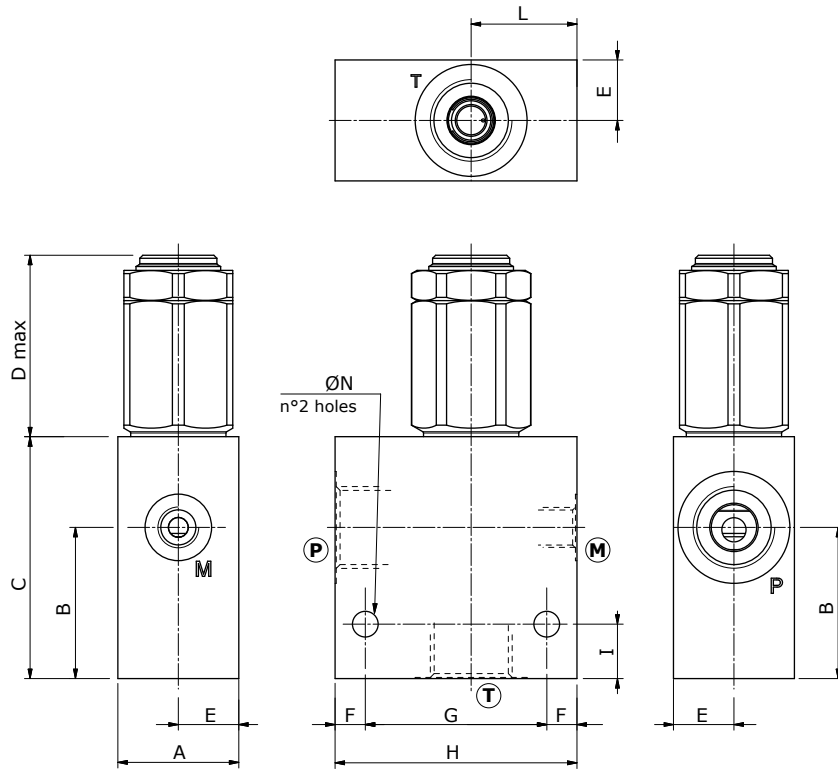
Technical specifications and diagrams are measured with mineral oil of 46 cSt viscosity at 40°C (104°F) temperature.

	<b>VMPD/B 38</b>	<b>VMPD/B 12</b>	<b>VMPD/B 34</b>	<b>VMPD/B 100</b>	
Nominal flow	35 l/min (9.2 US gpm)	60 l/min (16 US gpm)	100 l/min (26.4 US gpm)	180 l/min (47.6 US gpm)	
Max. pressure	Aluminium body = 210 bar (3050 psi) Steel body = 350 bar (5100 psi)				
Oil leakage at 80% of max. setting	0.25 cm <sup>3</sup> /min (0.01 in <sup>3</sup> /min)				
Fluid	mineral based oil				
Viscosity	from 10 to 200 cSt				
Max. level of contamination	18/16/13 ISO4406				
Fluid temperature	with NBR seals from -20°C (-4°F) to 80°C (176°F)				
Environmental temp. for working conditions	from -40°C (-40°F) to 100°C (212°F)				
Weight	<i>alum.</i>	0.50 kg (1.10 lb)	0.68 kg (1.50 lb)	1.12 kg (2.47 lb)	1.42 kg (3.13 lb)
	<i>steel</i>	0.92 kg (2.03 lb)	1.28 kg (2.82 lb)	2.04 kg (4.50 lb)	2.72 kg (6.65 lb)

NOTE - For different conditions, please contact Walvoil Sales Dpt.



## Dimensions

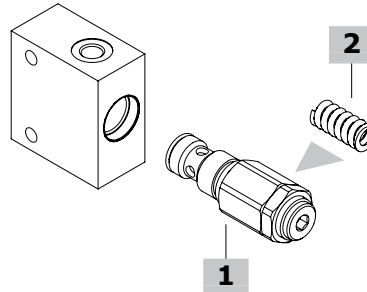
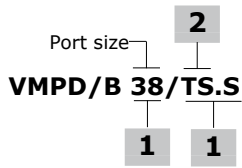


Valve type	T	P	M
<b>VMPD/B 38</b>	G3/8	G3/8	G1/4
<b>VMPD/B 12</b>	G1/2	G1/2	G1/4
<b>VMPD/B 34</b>	G3/4	G3/4	G1/4
<b>VMPD/B 100</b>	G1"	G1"	G1/4

Dimensions are in mm-in

Valve type	A	B	C	D max	E	F	G	H	I	L	ØN
<b>VMPD/B 38</b>	30-1.18	38-1.50	60-2.36	57.7-2.27	15-0.59	10-0.39	40-1.57	60-2.36	15-0.59	30-1.18	6.5-0.25
<b>VMPD/B 12</b>	35-1.38	43-1.69	65-2.55	56.2-2.21	17.5-0.69	10-0.39	50-1.97	70-2.75	15-0.59	33-1.30	8.5-0.33
<b>VMPD/B 34</b>	40-1.57	50-1.97	80-3.15	68.8-2.71	20-0.79	10-0.39	60-2.36	80-3.15	18-0.71	35-1.38	8.5-0.33
<b>VMPD/B 100</b>	50-1.97	59-2.32	90-3.54	68.8-2.71	25-0.98	10-0.39	70-2.75	90-3.54	20-0.79	42-1.65	10.5-0.41

**Ordering codes and description composition**



**VMPD/B complete valves**

TYPE	CODE	DESCRIPTION
<b>Configuration with G3/8 standard thread</b>		
<b>VMPD/B 38/TS.S</b>	1121021102	Aluminium body, setting range 5-210 bar (72.5-3045 psi), std. setting 150 bar @ 5 l/min (2175 psi at 1.32 US gpm)
<b>VMPD/B 38/TS.S/ac</b>	1121022102	Steel body, as previous one
<b>Configuration with G1/2 standard thread</b>		
<b>VMPD/B 12/TS.S</b>	1121031102	Aluminium body, setting range 5-210 bar (72.5-3045 psi), std. setting 150 bar @ 5 l/min (2175 psi at 1.32 US gpm)
<b>VMPD/B 12/TS.S/ac</b>	1121032100	Steel body, as previous one)
<b>Configuration with G3/4 standard thread</b>		
<b>VMPD/B 34/TS.S</b>	1121041102	Aluminium body, setting range 5-210 bar (72.5-3045 psi), std. setting 150 bar @ 5 l/min (2175 psi at 1.32 US gpm)
<b>VMPD/B 34/TS.S/ac</b>	1121042100	Steel body, as previous one
<b>Configuration with G1" standard thread</b>		
<b>VMPD/B 100/TS.S</b>	1121051102	Aluminium body, setting range 5-210 bar (72.5-3045 psi), std. setting 150 bar @ 5 l/min (2175 psi at 1.32 US gpm)
<b>VMPD/B 100/TR.S/ac</b>	1121052100	Steel body, setting range 50-350 bar (725-5100 psi), std. setting 250 bar @ 5 l/min (3600 psi at 1.32 US gpm)

For other steel body configurations, SAE thread and configurations with FPM (Viton) seals please contact our Sales Dpt.

**1 Direct acting pressure relief valves**

*Standard setting 150 bar at 5 l/min (2175 psi at 1.32 US gpm)*

TYPE	CODE	DESCRIPTION
<b>For G3/8 ports configuration</b>		
<b>VMPD 38/TS.S</b>	1120020402	Setting range 5-210 bar (72.5-3050 psi)
<b>For G1/2 ports configuration</b>		
<b>VMPD 12/TS.S</b>	1120030402	Setting range 5-210 bar (72.5-3050 psi)
<b>For G3/4 and G1" ports configuration</b>		
<b>VMPD 34/TS.S</b>	1120040402	Setting range 5-210 bar (72.5-3050 psi)

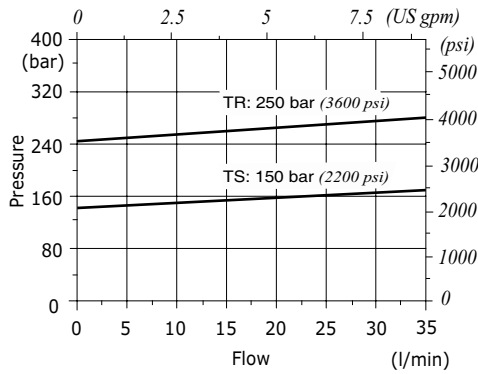
**2 Pressure setting spring**

TYPE	CODE	DESCRIPTION
<b>For VMPD/B38 valve</b>		
<b>TS</b>	3ML1144000	Setting range 5-210 bar (72.5-3050 psi)
<b>TR</b>	3ML1144001	Setting range 50-350 bar (725-5100 psi)
<b>For VMPD/B12 valve</b>		
<b>TS</b>	3ML1164000	Setting range 5-210 bar (72.5-3050 psi)
<b>TR</b>	3ML1164001	Setting range 50-350 bar (725-5100 psi)
<b>For VMPD/B34 and VMPD/B100 valves</b>		
<b>TS</b>	3ML1194500	Setting range 5-210 bar (72.5-3050 psi)
<b>TR</b>	3ML1194501	Setting range 50-350 bar (725-5100 psi)

## Rating diagrams

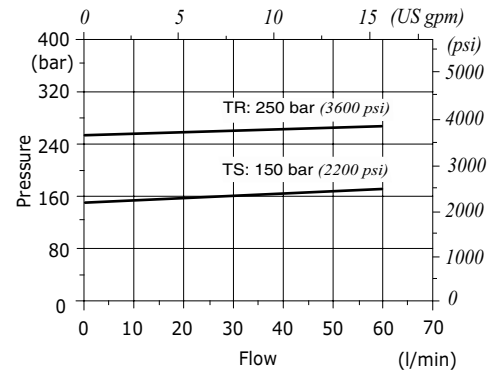
**VMPD/B 38 pressure vs. flow**

Std. setting @ 5 l/min (1.32 US gpm)



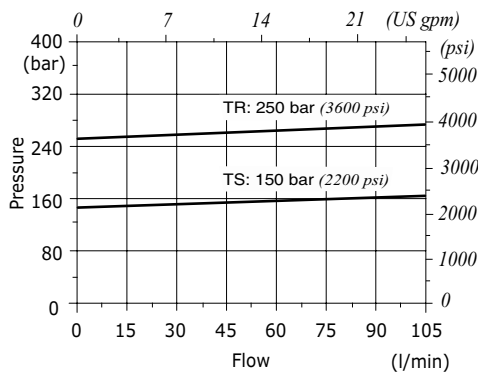
**VMPD/B 12 pressure vs. flow**

Std. setting @ 5 l/min (1.32 US gpm)



**VMPD/B 34 pressure vs. flow**

Std. setting @ 5 l/min (1.32 US gpm)



**VMPD/B 100 pressure vs. flow**

Std. setting @ 5 l/min (1.32 US gpm)

